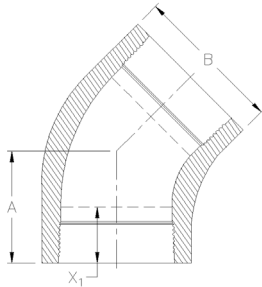


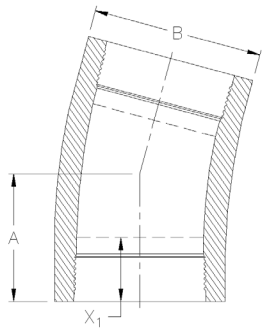
STAR™ Super Seal HP Fittings

45° Elbow Female x Female



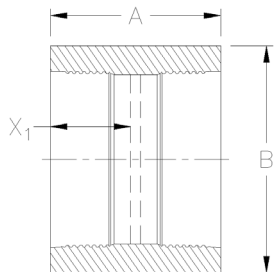
Thread Size Inches	Pressure Rating		In	A (mm)	In	B (mm)	In	X ₁ (mm)	Wt	
	psi	(MPa)							Lbs	(kg)
8	1500	(10.3)	13.50	(342.9)	11.1	(281.9)	8.75	(222.3)	52	(23.6)
	2000	(13.8)							77	(34.9)
	2500	(17.2)							103	(46.7)
	3000	(20.7)							127	(57.6)
10	1500	(10.3)	13.75	(349.3)	14.4	(365.8)	8.75	(222.3)	96	(43.5)
	2000	(13.8)							136	(61.7)
	2500	(17.2)							178	(80.7)
12	1500	(10.3)	14.00	(355.6)	17.8	(452.1)	8.75	(222.3)	181	(82.1)
	2000	(13.8)							231	(104.8)

15° Elbow Female x Female



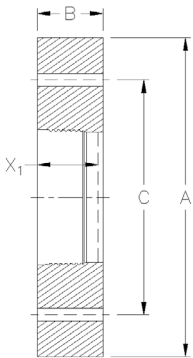
Thread Size Inches	Pressure Rating		In	A (mm)	In	B (mm)	In	X ₁ (mm)	Wt	
	psi	(MPa)							Lbs	(kg)
8	1500	(10.3)	13.50	(342.9)	11.1	(281.9)	8.75	(222.3)	52	(23.6)
	2000	(13.8)							77	(34.9)
	2500	(17.2)							103	(46.7)
	3000	(20.7)							127	(57.6)
10	1500	(10.3)	13.75	(349.3)	14.4	(365.8)	8.75	(222.3)	96	(43.5)
	2000	(13.8)							136	(61.7)
	2500	(17.2)							178	(80.7)
12	1500	(10.3)	14.00	(355.6)	17.8	(452.1)	8.75	(222.3)	181	(82.1)
	2000	(13.8)							231	(104.8)

Threaded Couplings Female x Female



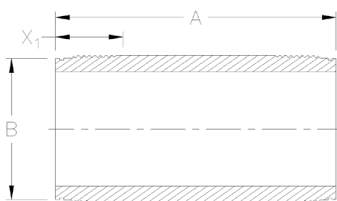
Thread Size Inches	Pressure Rating		In	A (mm)	In	B (mm)	In	X ₁ (mm)	Wt	
	psi	(MPa)							Lbs	(kg)
8	1500	(10.3)	18.5	(469.9)	10.7	(271.8)	8.75	(222.3)	32	(14.5)
	2000	(13.8)							46	(20.9)
	2500	(17.2)							63	(28.6)
	3000	(20.7)							79	(35.8)
10	1500	(10.3)	18.5	(469.9)	13.9	(353.1)	8.75	(222.3)	59	(26.8)
	2000	(13.8)							83	(37.6)
	2500	(17.2)							111	(50.3)
12	1500	(10.3)	18.5	(469.9)	16.2	(411.5)	8.75	(222.3)	81	(36.7)
	2000	(13.8)							119	(54.0)

Flanges⁽²⁾ Female



Thread Size In	Pressure Rating	Pressure Rating	A	B	C	X ₁ In (mm)	No. of Bolts	Bolt ⁽¹⁾	Bolt Hole Size In (mm)	Wt Lbs (kg)
	psi (MPa) 100°F	psi (MPa) 200°F	Flange O.D. In (mm)	Flange Width In (mm)	Bolt Circle In (mm)			Size Length In (mm)		
ANSI 600										
8	1480 (10.2)	1350 (9.3)	16.5 (419.1)	9.23 (234.4)	13.75 (349.3)	9.13 (231.9)	12	1.125 x 24 (28.575 x 609.6)	1.25 (31.8)	88 (39.9)
10	1480 (10.2)	1350 (9.3)	20 (508.0)	9.23 (234.4)	17 (431.8)	11.65 (295.9)	16	1.25 x 24 (31.75 x 609.6)	1.375 (34.9)	123.5 (56.0)
12	1480 (10.2)	1350 (9.3)	22 (558.8)	9.23 (234.4)	19.25 (489.0)	13.57 (344.7)	20	1.25 x 24 (31.75 x 609.6)	1.375 (34.9)	138.7 (62.9)
ANSI 900										
8	2200 (15.2)	2025 (14.0)	18.5 (469.9)	9.23 (234.4)	15.5 (393.7)	9.13 (231.9)	12	1.375 x 24 (34.925 x 609.6)	1.5 (38.1)	119.3 (54.1)
10	2200 (15.2)	2025 (14.0)	21.5 (546.1)	9.23 (234.4)	18.5 (469.9)	11.65 (295.9)	16	1.375 x 24 (34.925 x 609.6)	1.5 (38.1)	152.1 (69.0)
12	2200 (15.2)	2025 (14.0)	24 (609.6)	9.23 (234.4)	21 (533.4)	13.57 (344.7)	20	1.375 x 24 (34.925 x 609.6)	1.5 (38.1)	181.7 (82.4)
ANSI 1500										
8	3705 (25.5)	3375 (23.3)	19 (482.6)	9.23 (234.4)	15.5 (393.7)	9.13 (231.9)	12	1.625 x 24 (41.275 x 609.6)	1.75 (44.5)	123.9 (56.2)
10	3705 (25.5)	3375 (23.3)	23 (584.2)	9.23 (234.4)	19 (482.6)	11.65 (295.9)	12	1.875 x 24 (47.625 x 609.6)	2 (50.8)	179.2 (81.3)

Threaded Nipples Male x Male



Thread Size Inches	Pressure Rating				B In (mm)	X ₁ In (mm)	A - Standard Length ft. (m)			
	Anhydride		AromaticAmine				2 (0.61)		3 (0.91)	
	psi (MPa)	psi (MPa)	psi (MPa)	psi (MPa)			Weight lbs (kgs)			
8	3000 (20.7)	2000 (13.8)	7.49 (190.2)	8.75 (222.3)	43 (19.5)	65 (29.3)				
10	2500 (17.2)	1500 (10.3)	9.84 (249.9)	8.75 (222.3)	61 (27.7)	92 (41.5)				
12	2250 (15.5)	1250 (8.6)	11.8 (300.0)	8.75 (222.3)	70 (31.8)	105 (47.6)				

Thread Size Inches	Pressure Rating				B In (mm)	X ₁ In (mm)	A - Standard Length ft. (m)							
	Anhydride		AromaticAmine				4 (1.22)		6 (1.83)		8 (2.44)		10 (3.05)	
	psi (MPa)	psi (MPa)	psi (MPa)	psi (MPa)			Weight lbs (kgs)							
8	3000 (20.7)	2000 (13.8)	7.49 (190.2)	8.75 (222.3)	86 (39.0)	129 (58.5)	172 (78.0)	215 (97.5)						
10	2500 (17.2)	1500 (10.3)	9.84 (249.9)	8.75 (222.3)	122 (55.3)	183 (83.0)	244 (110.7)	305 (138.3)						
12	2250 (15.5)	1250 (8.6)	11.8 (300.0)	8.75 (222.3)	140 (63.5)	210 (95.3)	280 (127.0)	350 (158.8)						

National Oilwell Varco has produced this brochure for general information only, and it is not intended for design purposes. Although every effort has been made to maintain the accuracy and reliability of its contents, National Oilwell Varco in no way assumes responsibility for liability for any loss, damage or injury resulting from the use of information and data herein nor is any warranty expressed or implied. Always cross-reference the bulletin date with the most current version listed at the web site noted in this literature.

North America
17115 San Pedro Avenue
Suite 200
San Antonio, TX 78232 USA
Phone: +1 210 477 7500

South America
Estrada de Acesso à Zona
Industrial Portuária de Suape, s/no.
Recife, PE, Brazil 55.590-000
Phone: +55 81 3501 0023

Europe
P.O. Box 6, 4190 CA
Geldermalsen, The Netherlands
Phone: +31 345 587 587

Asia Pacific
No. 7A, Tuas Avenue 3
Jurong, Singapore 639407
Phone: +65 6861 6118

Middle East
P.O. Box 17324
Dubai, UAE
Phone: +971 4881 3566